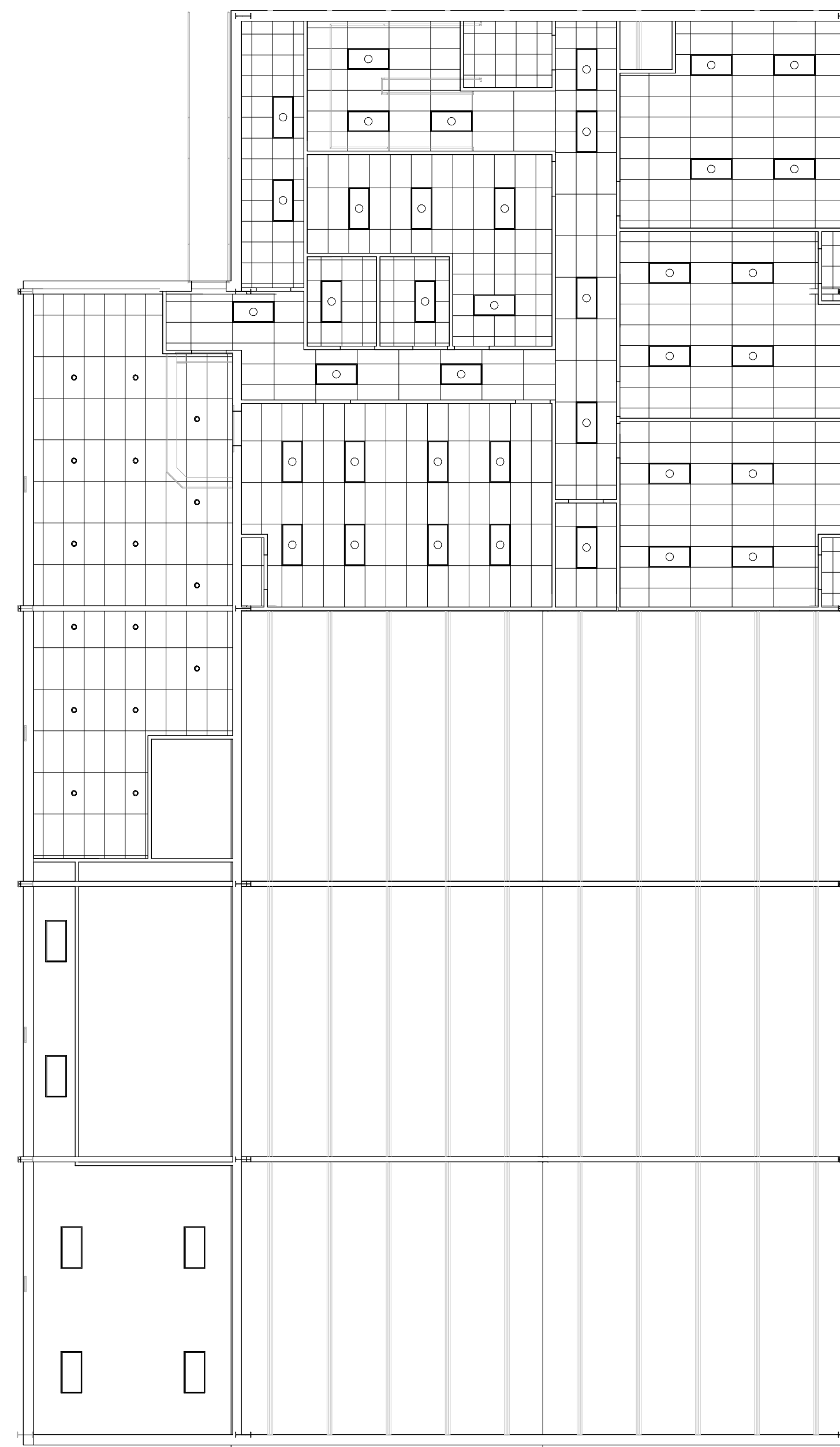


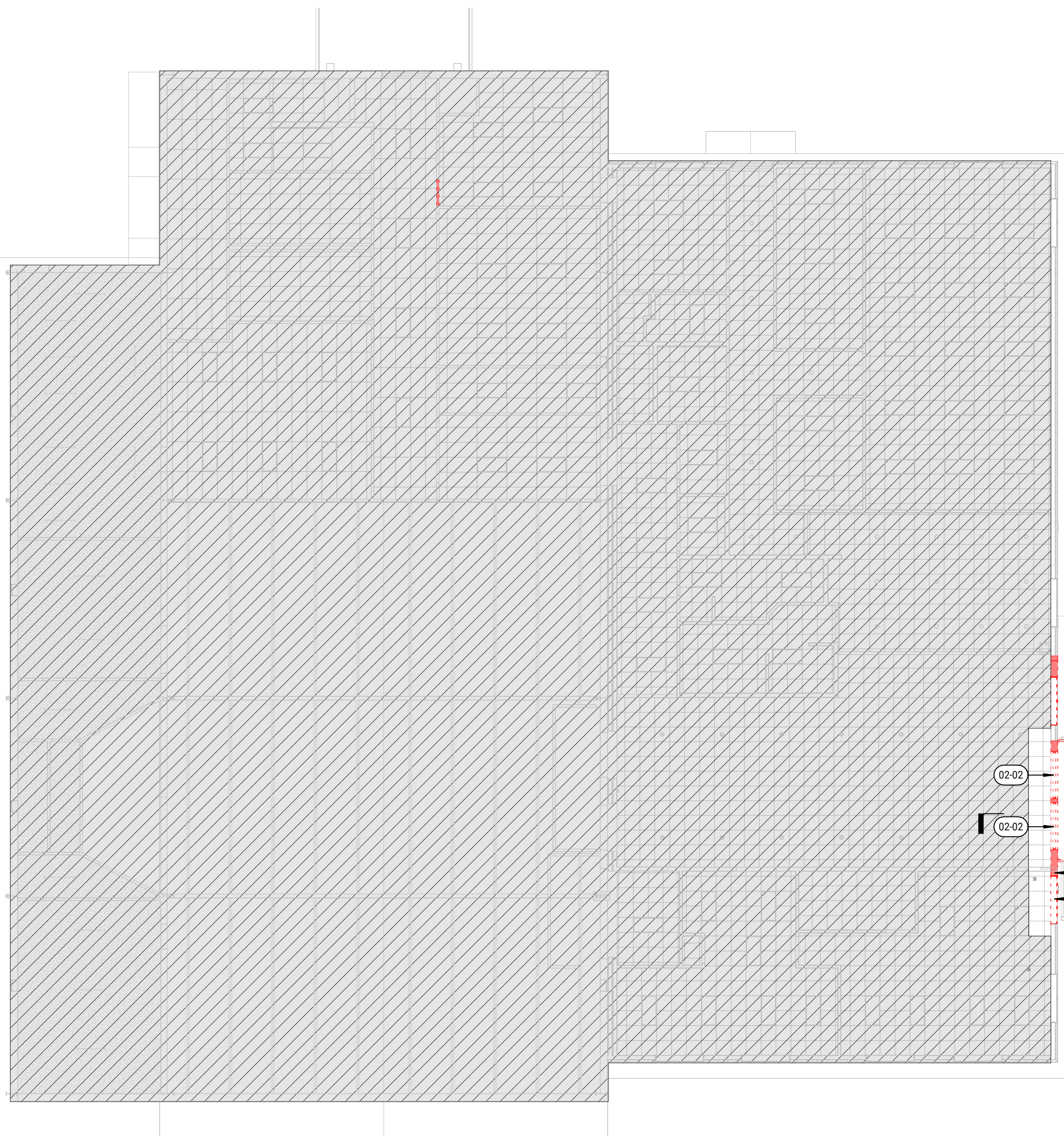
DEMO 2ND FLOOR - RCP  
SCALE: 3/32" = 1'-0" 4C

4C



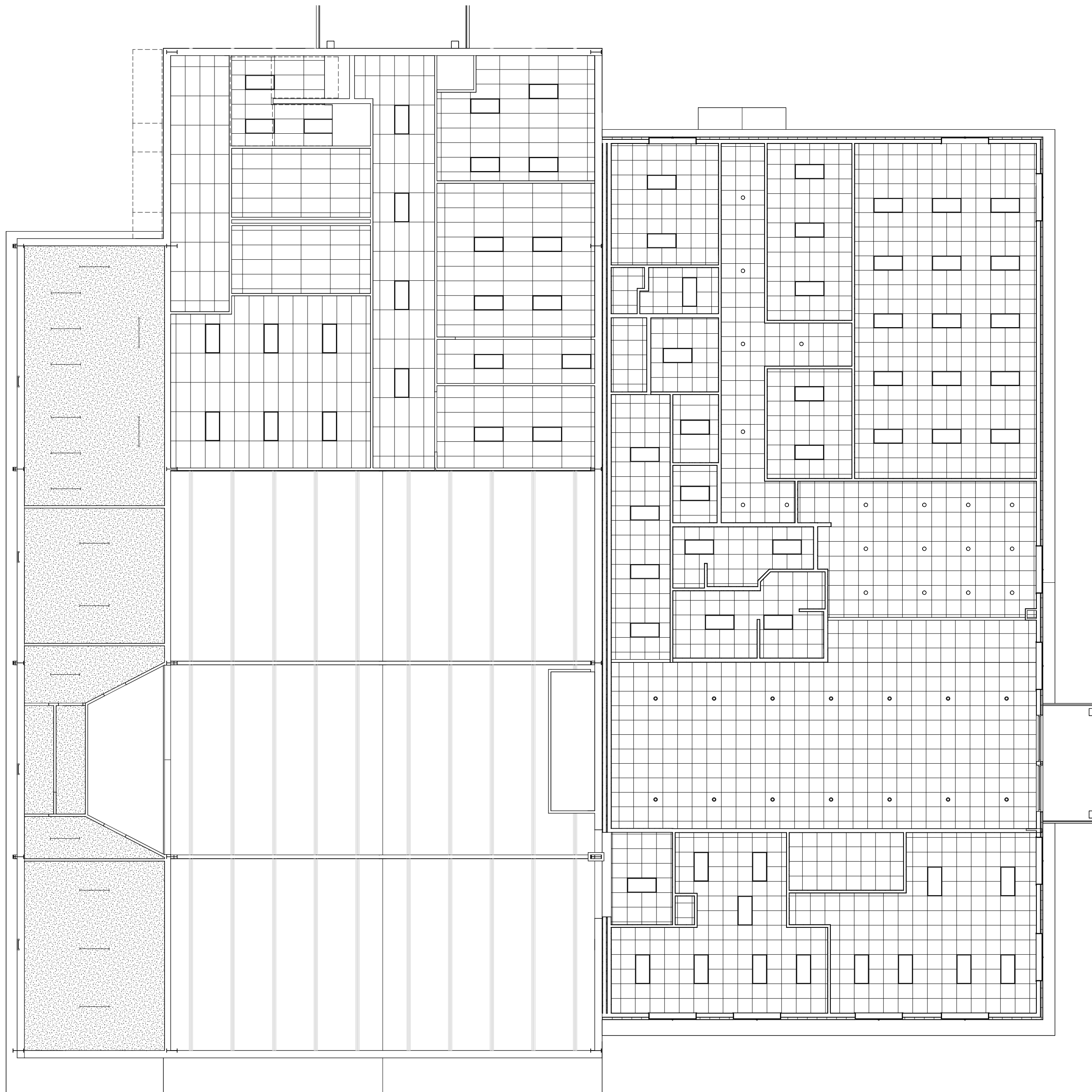
**EX. 2ND FLOOR - RCP**  
SCALE: 3/32" = 1'-0"

1C



DEMO FIRST FLOOR - RCP

4A




EX. 1ST FLOOR - RCP  
SCALE: 3/32" = 1'-0"

1A

## SHEET KEYNOTES

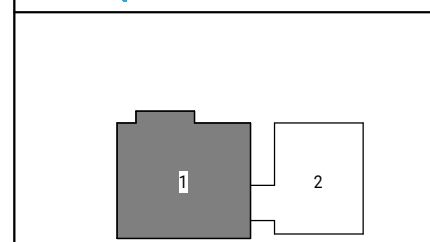
02-01	REMOVE PORTION OF EXISTING EXTERIOR WALL AS REQUIRED
02-02	REMOVE EXISTING STOREFRONT DOORS AND SAVE FOR REUSE IF IN GOOD WORKING CONDITION
02-03	DEMO EXISTING WINDOW
02-04	REMOVE EXISTING CANOPY AND CORRESPONDING STRUCTURE

## DEMO LEGEND

	DEMOLISHED
	DEMOLISHED WALL

Risepointe  
architecture • design • interiors

1501 N 2ND STREET  
SEATTLE, WA 98103  
P 206.457.6397



**ARCHITECTURE**  
**RISEPOINTE**  
CONTACT: CHRIS STRASSER  
200 N HARRISON ST UNIT 101  
ALGONQUIN, IL 60102  
P.815.950.8087  
WWW.RISEPOINTE.COM

**GENERAL CONTRACTOR**  
**A.R. CHESSON**  
CONTACT: CHRIS MORRIS  
138 E RICH BLVD  
ELIZABETH CITY, NC 27909  
P. 252.338.9171  
WWW.ARCHESSEON.COM

**CIVIL ENGINEERING  
EASTERN CAROLINA CONSTRUCTION**

CONTACT: BRIANT ROBEY  
154 US HWY 158 E  
CAMDEN, NC 27921  
P.252.621.3570  
[WWW.EASTERNCAROLINAENGINEERING.COM](http://WWW.EASTERNCAROLINAENGINEERING.COM)

**STRUCTURAL  
TOWER PINKSTER**

CONTACT: BAILEY RAMLER  
4 FULTON ST E #200  
GRAND RAPIDS, MI 49503  
P.616.794.6225  
[WWW.TOWERPINKSTER.COM](http://WWW.TOWERPINKSTER.COM)

**MECHANICAL  
TOWER PINKSTER**  
CONTACT: DENVER WESSELS  
4 FULTON ST E #200  
GRAND RAPIDS, MI 49503  
P.616.456.5944  
[WWW.TOWERPINKSTER.COM](http://WWW.TOWERPINKSTER.COM)

**ELECTRICAL  
TOWER PINKSTER**

CONTACT: CONNOR NICKELSON  
4 FULTON ST E #200  
GRAND RAPIDS, MI 49503  
P.616.456.9944  
[WWW.TOWERPINKSTER.COM](http://WWW.TOWERPINKSTER.COM)

**PLUMBING  
TOWER PINKSTER**  
CONTACT: DENVER WESSELS  
4 FULTON ST E #200  
GRAND RAPIDS, MI 49503  
P.616.456.9944

WWW.TOWERPINKSTER.COM

**AUDIO - VIDEO - LIGHTING - ACOUSTICS  
LIVESPACE**

CONTACT: JOHN HENRY  
4995 STARR ST SE  
GRAND RAPIDS, MI 49546  
P 616.572.8547

WWW.IVESPACE.COM

**INFORMATION TECHNOLOGY  
INTULSE**

CONTACT: CHRIS STIEB  
131 FOXSHIRE DR  
LANCASTER, PA 17601

NO.	DESCRIPTION	ISSUE DATE
A	PROGRESS PLOT	10.24.2025
B	PROGRESS PLOT	11.25.2025
C	ISSUED FOR 100% DD	2026.01.30
D	PROGRESS PLOT	2026.03.13
E	ISSUED FOR PERMIT	2026.03.23
F	ISSUED FOR 95% CD	2026.04.30

[illegible]